



TEA Datasheet

LA-XX-24-120-210-XX-010

Discription

LA (Liquid to Air) Series Coolers, also known as Liquid Coolers. The hot end is a heat dissipation method of a radiator and a fan, and the cold end is usually a metal water plate with an additional pump to allow the liquid (water) to flow and transfer heat.

LA coolers excel at delivering cooling to concentrated heat sources such as laser diodes and for delivering cooled fluid into remote or compact locations where the cooling assembly itself cannot be located.

When using LA Coolers, the cold end (cold water plate) and water pipes should be well insulated to reduce heat exchange with the environment.

Feature

- High reliability design
- Compact design, easy to installation
- DC operation
- High cooling efficiency
- Support customization

Application

- Medical diagnostics
- Analytical instrumentation
- Industrial instrumentation
- Photonics laser systems
- Food and beverage cooling

Naming rules

LA①-XX②-24③- 120④-210⑤-XX⑥-010⑦

①Product type

②Cooling capacity at 0°C temperature difference.

③working voltage

④The width of the Cooler

⑤The length of the Cooler

⑥electric power of the Cooler

⑦Internal code

Physical figure



picture fo reference only



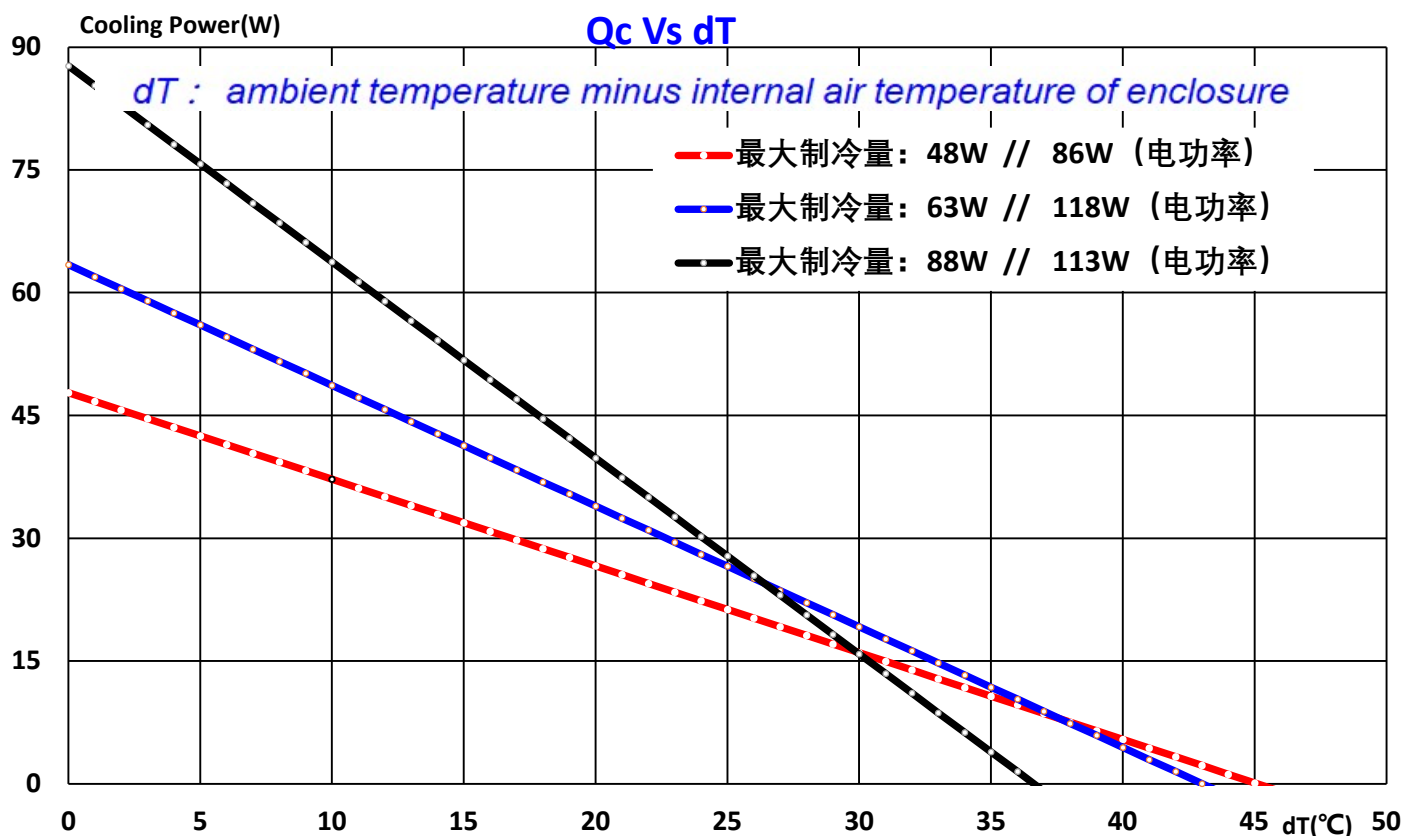
TEA Datasheet

LA-XX-24-120-210-XX-010

Performance Specification

Cooler Model	LA-48-24-120-210-86	LA-63-24-120-210-118	LA-88-24-120-210-113
Cooling power Qcmax(W)	48	63	88
Nominal Voltage(V)	24		
Max Voltage(V)	26		
Running current(A)	3.6	4.9	4.7
Startup current(A)	4.3	5.9	5.6
AC adapter 12V	5A	7A	7A
Power Input(W)	86	118	113
COP(dT=0)	55%	54%	78%
MTBF (fans – hrs)(h)	40000		
Dimensions(mm3)	W*L*H 120X210X85 Additional insulation layer 12mm		
Weight(Kg)	1.6		
Performance tolerance	±10%		
Operating tem(°C)	-10 to 50 °C		
Please refer to the performance curves below for the cooling capacity under different temperature differences.			
All performance indicators are tested under conditions of ambient temperature of 25 °C and good ventilation at the hot end.			
Internal code	LA21043172101	LA21041932101	LA21041413101

Performance Curves

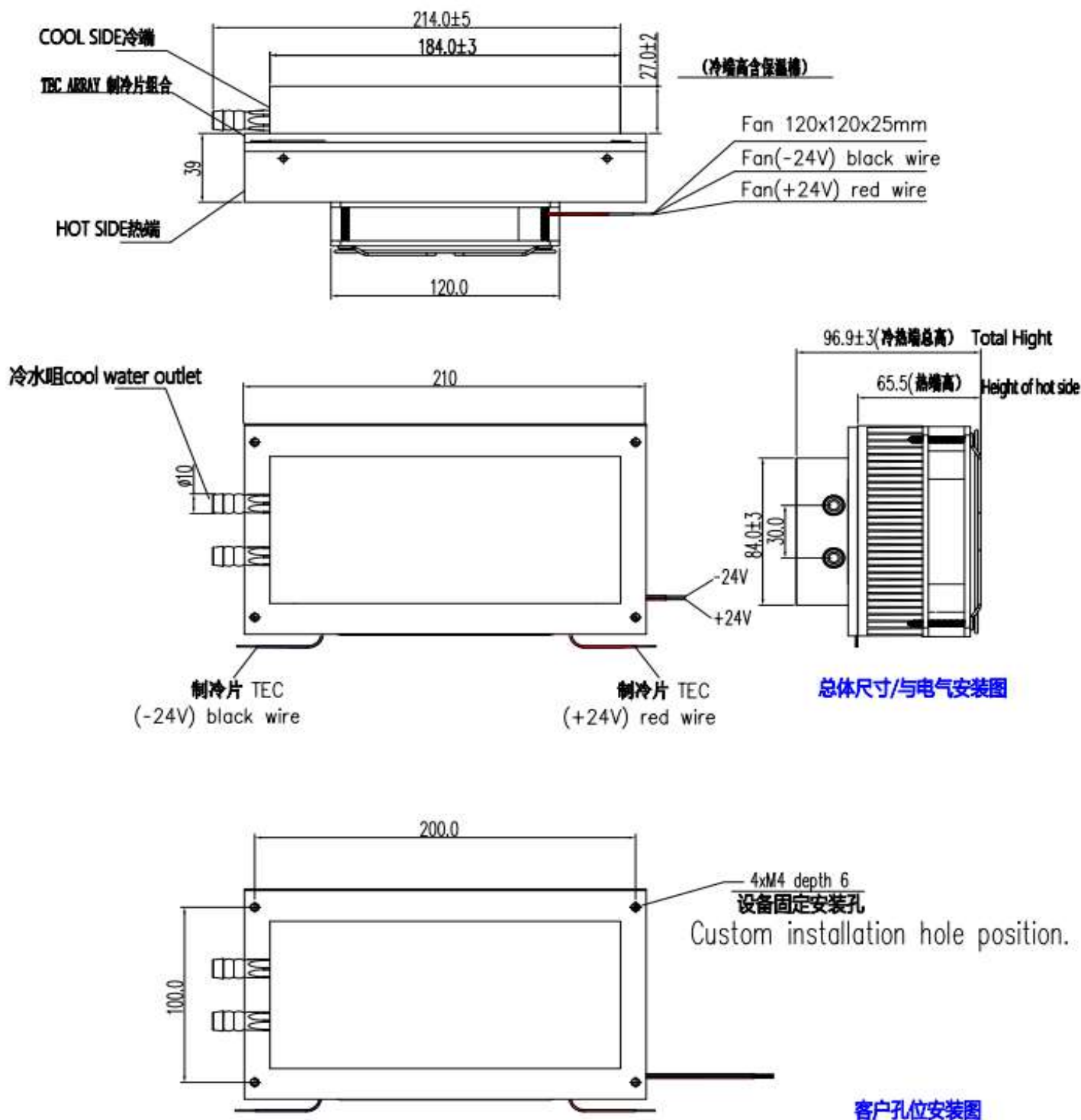




TEA Datasheet

LA-XX-24-120-210-XX-010

Dimensions and Installation drawing



官网: www.tecooler.com

可下载完整图纸



TEA Datasheet

LA-XX-24-120-210-XX-010

Notices of installation and operation

- Please make sure that no collision or oscillation will happen during the process of transportation and operation to avoid the damages to the components.
- The product must be installed in the environment with good ventilation. It is suggested that the equipment should normally operate for 30 minutes before the formal use.
- The standard product should only be used indoors. Please contact the sales staffs of our company if you need to use it outdoors.
- Please make sure that the input voltage should not exceed the maximum voltage specified in the column of performance parameters.
- It is suggested that the function of thermoelectric cooler shutdown in the case of fan damages should be added to the circuit.
- It is suggested that the fan should be cleaned and maintained on an annual basis. Please cut off the power before any abnormal operations.
- Please do not touch the product when the Cooler is working. The cooling end may result in freezing injuries, and the heating end may lead to scalds in some cases.
- The product, the fan and the thermoelectric cooler adopt the same voltage when all red wires are connected to the positive pole and all black wires are connected to the negative pole.
- All performance indicators are tested in the environment with good ventilation at the heating end. If the ventilation at the heating end is not ideal, the performance may be influenced.
- When using the LA component, heat preservation should be ensured at the cooling end (water-cooling plate) and the water pipe to reduce the heat exchange with the environment.
- Liquid solidification should be paid attention to in the environment with a low temperature.

Related accessories (to be purchased separately)

- DC switching power supply
- Condensate water connection tray and water pipe, etc
- temperature controller

Contact information

Website : <http://www.tecooler.com/en/index.html>

E-mail: 13631671636@163.com